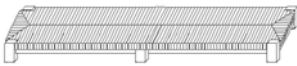


POTTERY BARN

Como Occ SA Bench Assembly instruction

- Please read all instructions before beginning assembly.
- For your safety and convenience, assembly by two people is recommended.
- Use the parts and hardware lists to identify and separate each of the component included.
- Save all packing materials until assembly is completed to avoid the accidental discarding of smaller parts or hardware.

Parts:



(1) Rush seat top - A



(6) Middle legs - B



(1) Bottom strengthener - C



(6) Bottom legs - D

Assembly instructions:

1. Carefully place the top (A) upside down on a carpeted or scratch-free surface.
2. Align the pre-assembled hanger bolt on the middle leg (B) with the pre-drilled holes on the bottom of post. Insert the hanger bolt into the hole and turn the leg clockwise until secure. Repeat step for remaining legs. (Fig. 1)

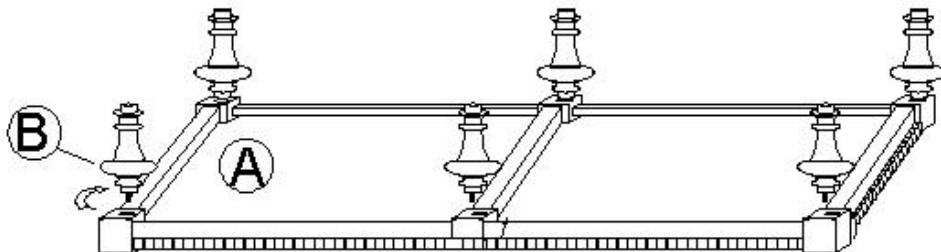


Fig.1

3. Lift up the bottom strengthener (C) with the bottom side faced up. Align the pre-drilled holes on the six corner blocks of the strengthener with the stem on each end of the legs. Gently rest the strengthener on the legs.
4. Align the bolt on the bottom legs (D) with the corner block of the strengthener (C) and the pre-drilled hole of the middle leg (B). Turn the leg clockwise to tighten and secure. Repeat the step for the remaining legs (D). (Fig. 2)

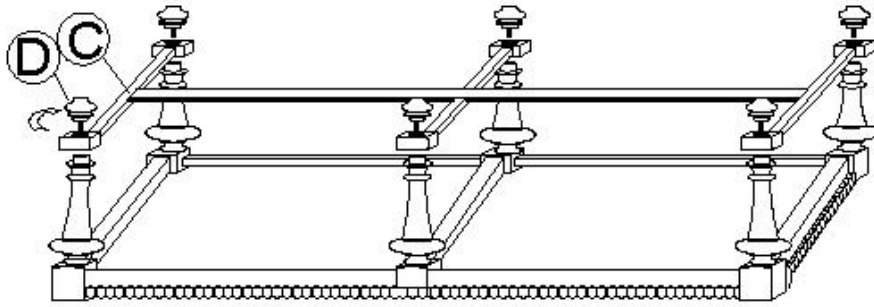


Fig.2

5.Assembly is now completed.

Care Instructions:

- Dust with a clean, soft damp cloth and wipe dry immediately.
- Avoid the use of chemicals and harsh cleaning agents.

thank you for your purchase

stores | catalog | www.potterybarn.com