

POTTERY BARN

UPHOLSTERY FABRIC GUIDE

EXPLORE OUR FABRICS	2
OUR FAVORITE FABRICS	2
ORDER FREE SWATCHES	2
FABRIC QUALITY ICONS	3

OUR FAVORITE FABRICS	4
- Warm Neutrals	4
- Classic Blues	5
- Versatile Grays	6
- Whites & Ivories	7

PERFORMANCE FABRICS	8
- Performance Bouclé	8
- Performance Brushed Basketweave	9
- Performance Château Basketweave	9
- Performance Everydaylinen™	10
- Performance Everydayuede™	10
- Performance Everydayvelvet™	11
- Performance Heathered Basketweave	11
- Performance Heathered Tweed	12
- Performance Heathered Velvet	13
- Performance Plush Velvet	13
- Performance Slub Cotton	14
- Performance Twill	14
- Premium Performance Awning Stripe	15
- Premium Performance Basketweave	15
- Sunbrella® Performance Boss Herringbone	16
- Sunbrella® Performance Chenille	16
- Sunbrella® Performance Essential	17
- Sunbrella® Performance Herringbone	17
- Sunbrella® Performance Sahara Weave	18
- Sunbrella® Performance Slub Tweed	18

SUBTLE TEXTURE FABRICS	19
- Performance Brushed Basketweave	19
- Premium Performance Basketweave	20
- Sunbrella® Performance Essential	21
- Textured Basketweave	21

DISTINCTIVE TEXTURE FABRICS	22
- Jumbo Basketweave	22
- Performance Bouclé	22
- Performance Château Basketweave	23
- Sunbrella® Performance Boss Herringbone	23
- Sunbrella® Performance Herringbone	24
- Sunbrella® Performance Sahara Weave	24

LINEN APPEAL FABRICS	25
- Basketweave Slub	25
- Belgian Linen	25
- Classic Basketweave	26
- Performance Everydaylinen™	26
- Performance Slub Cotton	27
- Sunbrella® Performance Slub Tweed	27
- Washed Linen/Cotton	28

RELAXED CASUAL FABRICS	29
- Brushed Canvas	29
- Brushed Crossweave	29
- Denim	30
- Heathered Twill	30
- Park Weave	31
- Performance Twill	31
- Textured Twill	32
- Twill	32
- Washed Canvas	33

PLUSH & COZY FABRICS	34
- Chenille Basketweave	34
- Performance Everydayuede™	34
- Performance Everydayvelvet™	35
- Performance Heathered Tweed	35
- Performance Heathered Velvet	36
- Performance Plush Velvet	36
- Sunbrella® Performance Chenille	37

PRINT & PATTERN FABRICS	38
- Antique Stripe	38
- Eva Paisley Print	38
- Faded Shibori	39
- Ikat Geo	39
- Kendall Print	40
- Shalimar Jacquard	40
- Vintage Grainsack Buffalo	41
- Vintage Stripe	41

LUXE LEATHERS	42
- Our Favorite Leathers	42
- Churchfield	43
- Performance	43
- Statesville	44
- Vintage	44
- Burnished	45
- Legacy	45
- Signature	46
- Nubuck	46
- Antique	47
- Vegan	47

EXPLORE OUR FABRICS

Our collection of beautiful and durable fabrics has something for every space and style.

PERFORMANCE Tough on spills yet soft to the touch, these family-friendly fabrics stand up to real life.

SUBTLE TEXTURE Our lightly textured fabrics add just the right amount of visual interest.

DISTINCTIVE TEXTURE Heavyweight yet soft, our richly textured fabrics bring warmth and dimension to your space.

LINEN APPEAL Refined yet resilient, these linen-inspired fabrics have a relaxed look and premium feel.

RELAXED CASUAL Classic, timeless and versatile, these easygoing fabrics are always a good idea.

PLUSH & COZY These cozy fabrics, defined by their incredibly soft hand, are made for lounging.

LUXE LEATHER Beautiful, durable and buttery soft, our heirloom-quality leathers get even better with time.

OUR FAVORITE FABRICS

Not sure where to start? We've curated our designers' go-to fabrics by color to make it easy to find a combination you'll love.

ORDER FREE FABRIC SWATCHES

Considering a few options? Sample your favorites to find the look you love.



ACTUAL SIZE

FABRIC QUALITY ICONS

With durable constructions and specialized finishes, our fabrics are thoughtfully designed to take life in stride.



PERFORMANCE

Tough on spills yet soft to the touch, these family-friendly fabrics stand up to real life. Finished with innovative formulas or chosen for their inherent performance qualities, they're easy to clean and care for.



PET FRIENDLY

Ideal for homes with one or more pets, these easy-clean fabrics are designed with a tight weave that is resistant to pet snags and trapping pet hairs.



STAIN RESISTANT

Finished with innovative formulas or chosen for their inherent performance qualities, these life-friendly fabrics easily release stains and are less susceptible to spills.



FADE RESISTANT

Suitable for sunrooms or spaces with bright natural light, these fabrics are woven of innovative solution-dyed acrylic yarns that won't lose color vibrancy from exposure to UV rays.



WOVEN IN THE USA

This fabric is proudly woven in the USA of American and imported materials.



CONTRACT GRADE

Engineered for both commercial and residential furniture in high-traffic areas, these highly resilient fabrics surpass durability standards with a rub count of over 40,000.



NATURAL FIBER

These fabrics consist of 100% all-natural fibers derived from plants, like cotton or linen, that offer breathability and a soft touch.

OUR FAVORITE FABRICS

WARM NEUTRALS

Versatile and effortless, our go-to neutrals are beautiful, balanced and easy to design around.



Performance Everydaylinen,
Oatmeal



Performance Brushed
Basketweave, Oatmeal



Sunbrella Performance
Slub Tweed, Pebble



Performance Bouclé,
Oatmeal



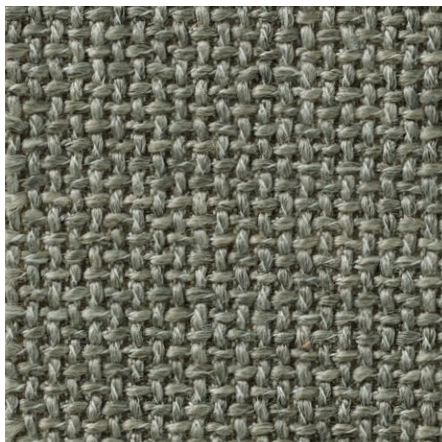
Performance Heathered
Tweed, Pebble



OUR FAVORITE FABRICS

CLASSIC BLUES

From soft to bold, our go-to blues add a subtle hint of color and unlimited design potential.



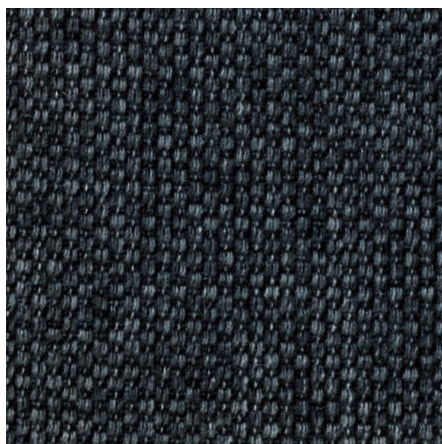
Performance Chateau
Basketweave, Blue



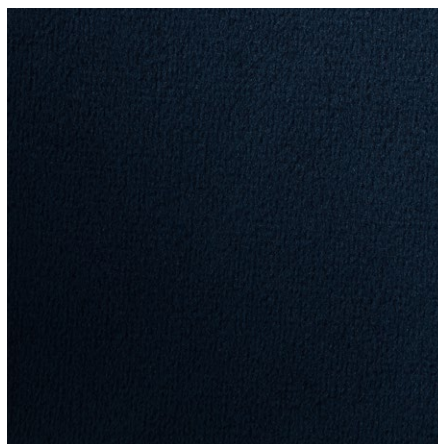
Brushed Crossweave,
Navy



Performance Heathered
Tweed, Indigo



Performance Brushed
Basketweave, Indigo



Performance
Everydayvelvet, Navy



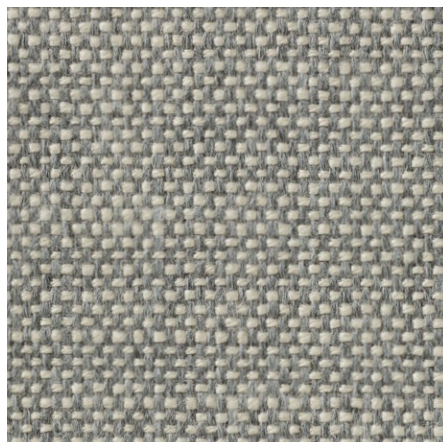
OUR FAVORITE FABRICS

VERSATILE GRAYS

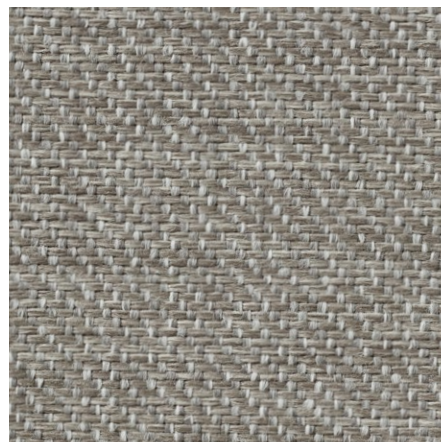
Cool, sophisticated and always in style, our go-to shades of gray easily tie a room together.



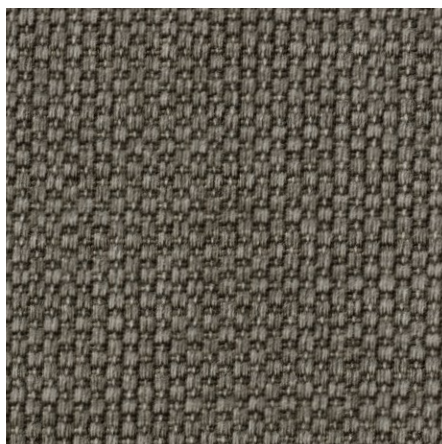
Basketweave Slub,
Ash



Premium Performance
Basketweave, Light Gray



Textured Twill,
Light Gray



Performance Brushed
Basketweave, Charcoal



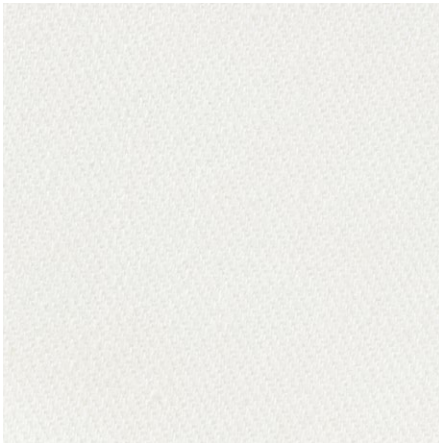
Sunbrella Performance
Slub Tweed, Charcoal



OUR FAVORITE FABRICS

WHITES & IVORIES

Classic, clean and crisp, our go-to white and ivory hues brighten up any space in a big way.



Performance Twill,
Warm White



Twill, White



Premium Performance
Basketweave, Ivory



Performance Everydaylinen,
Ivory



Performance Heathered
Tweed, Ivory



EXPLORE OUR FABRICS

PERFORMANCE

Tough on spills yet soft to the touch, these family-friendly fabrics stand up to real life.



PERFORMANCE BOUCLÉ

Richly textured, nubby fabric made from curled fibers that's cozy, durable and easy to clean.

Content: 79% Polyester, 16% Acrylic, 5% Linen

Grade: P, Contract Grade

Rub Count: 50K

Slipcover Care: Machine wash cold, gentle cycle, chlorine or non-chlorine bleach as needed. Rinse thoroughly, air dry; or spot clean with a damp white cloth and natural soap in lukewarm water using blotting motion.

Upholstery Care: Spot clean with a damp white cloth. Blot to remove excess water. Air dry or consult with a professional upholstery cleaner.



Performance Bouclé,
Oatmeal



Performance Bouclé,
Pebble



Performance Bouclé,
Dark Truffle



Performance Bouclé,
Charcoal



PERFORMANCE BRUSHED BASKETWEAVE

Supersoft natural-fiber fabric with a subtle woven texture that's durable and easy to clean.

Content: 100% Cotton

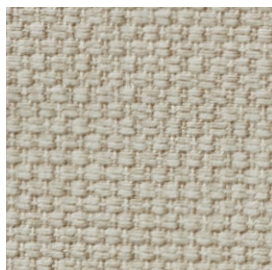
Grade: P

Slipcover Care: Dry clean. Can be spot cleaned with a damp white cloth, blot to remove excess water, air dry.

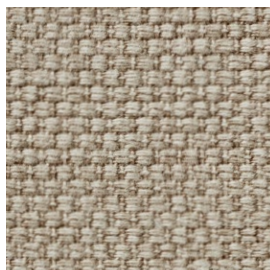
Upholstery Care: Spot clean with a damp white cloth. Blot to remove excess water. Air dry or consult with a professional upholstery cleaner.



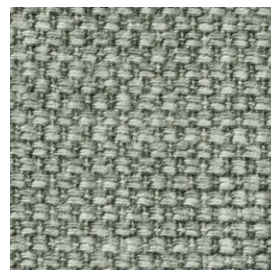
Performance Brushed Basketweave, Ivory



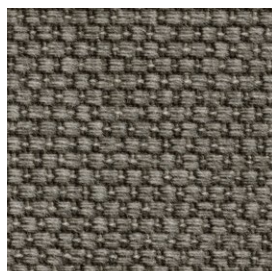
Performance Brushed Basketweave, Oatmeal



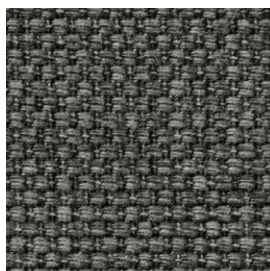
Performance Brushed Basketweave, Sand



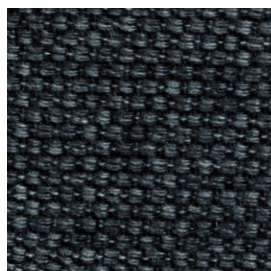
Performance Brushed Basketweave, Chambray



Performance Brushed Basketweave, Charcoal



Performance Brushed Basketweave, Slate



Performance Brushed Basketweave, Indigo Blue



PERFORMANCE CHÂTEAU BASKETWEAVE

Richly textured with incredible durability, this easy-to-clean, chunky woven fabric offers a wool-like feel and heathered appearance.

Content: 47% Acrylic, 18% Viscose, 11% Polyester, 11% Wool, 10% Cotton, 3% Nylon

Grade: P, Contract Grade

Rub Count: 100K

Slipcover Care: Dry clean. Can be spot cleaned with a damp white cloth, blot to remove excess water, air dry.

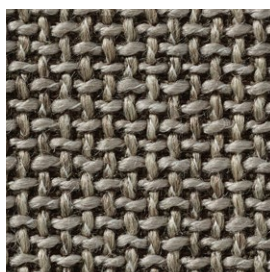
Upholstery Care: Spot clean with a damp white cloth. Blot to remove excess water. Air dry or consult with a professional upholstery cleaner.



Performance Château Basketweave, Ivory



Performance Château Basketweave, Oatmeal



Performance Château Basketweave, Light Gray



Performance Château Basketweave, Blue



PERFORMANCE EVERYDAYLINEN™ BY CRYPTON® HOME

A classic basketweave of linen and slub yarns give this fabric a beautiful, irregular texture that's soft and durable. This fabric has been engineered with Crypton® Home's superior performance technology for easy cleanup.

Content: 51% Rayon, 22% Linen, 16% Polyester, 11% Cotton

Grade: E, Contract Grade

Rub Count: 50K

Slipcover Care: Dry clean. Can be spot cleaned with a damp white cloth, blot to remove excess water, air dry.

Upholstery Care: Spot clean with a damp white cloth. Blot to remove excess water. Air dry or consult with a professional upholstery cleaner.



Performance
Everydaylinen, Ivory



Performance
Everydaylinen, Oatmeal



Performance
Everydaylinen, Stone



PERFORMANCE EVERYDAYSUEDE™

An ultrasoft, long-wearing microsuede fabric that's brushed for softness and easy to clean.

Content: 100% Polyester

Grade: C, Contract Grade

Rub Count: 50K

Slipcover Care: Dry clean. Can be spot cleaned with a damp white cloth, blot to remove excess water, air dry.

Upholstery Care: Spot clean with a damp white cloth. Blot to remove excess water. Air dry or consult with a professional upholstery cleaner.



Performance
Everydaysuede, Stone



Performance
Everydaysuede, Oat



Performance
Everydaysuede, Light Wheat



Performance
Everydaysuede, Metal Gray



PERFORMANCE EVERYDAYVELVET™

A long-wearing, high-performance velvet with a soft, plush pile for a luxurious feeling fabric that's easy to clean.

Content: 100% Polyester Face

Grade: A, Contract Grade

Rub Count: 50K

Slipcover Care: Dry clean. Can be spot cleaned with a damp white cloth, blot to remove excess water, air dry.

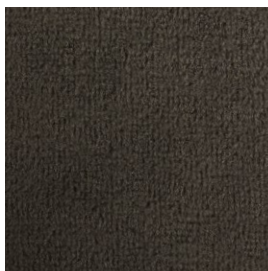
Upholstery Care: Spot clean with a damp white cloth. Blot to remove excess water. Air dry or consult with a professional upholstery cleaner.



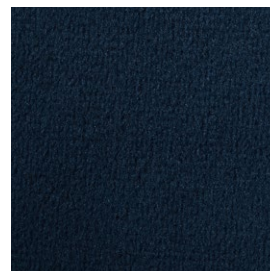
Performance
Everydayvelvet, Buckwheat



Performance
Everydayvelvet, Carbon



Performance
Everydayvelvet, Smoke



Performance
Everydayvelvet, Navy



PERFORMANCE HEATHERED BASKETWEAVE

A soft, textured fabric that weaves together thick and thin tonal yarns and provides the durability of performance materials.

Content: 100% Polyester

Grade: B

Rub Count: 50K

Slipcover Care: Dry clean. Can be spot cleaned with a damp white cloth, blot to remove excess water, air dry.

Upholstery Care: Spot clean with a damp white cloth. Blot to remove excess water. Air dry or consult with a professional upholstery cleaner.



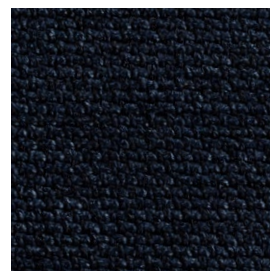
Performance
Heathered Basketweave,
Alabaster White



Performance Heathered
Basketweave, Dove



Performance Heathered
Basketweave, Platinum



Performance Heathered
Basketweave, Navy



PERFORMANCE HEATHERED TWEED

Crafted from soft, chenille yarn in variegated colors for a tweed-like look and superior stain resistance.

Content: 100% Polyester

Grade: P, Contract Grade

Rub Count: 50K

Slipcover Care: Machine wash cold, gentle cycle, only non-chlorine bleach when needed. Tumble dry low. Warm iron as needed or spot clean with a damp white cloth, blot to remove excess water, air dry.

Upholstery Care: Spot clean with a damp white cloth. Blot to remove excess water. Air dry or consult with a professional upholstery cleaner.



Performance Heathered
Tweed, Ivory



Performance Heathered
Tweed, Pebble



Performance Heathered
Tweed, Desert



Performance Heathered
Tweed, Graphite



Performance Heathered
Tweed, Indigo



PERFORMANCE HEATHERED VELVET

Buttery soft, velvety texture that offers the strength and stain resistance of performance fabrics. Features a touchable low pile and matte finish.

Content: 100% Polyester

Grade: D

Slipcover Care: Machine wash cold, gentle cycle, chlorine or non-chlorine bleach as needed. Tumble dry low. Warm iron as needed or spot clean with a damp white cloth, blot to remove excess water, air dry.

Upholstery Care: Spot clean with a damp white cloth. Blot to remove excess water. Air dry or consult with a professional upholstery cleaner.



Performance Heathered
Velvet, Olive



PERFORMANCE PLUSH VELVET

The luxe appeal of velvet in an easy-to-clean fabric. Soft to the touch with a refined matte finish.

Content: 100% Polyester

Grade: B, Contract Grade

Slipcover Care: Machine wash cold, gentle cycle, chlorine or non-chlorine bleach as needed. Rinse thoroughly, air dry; or spot clean with a damp white cloth and natural soap in lukewarm water using blotting motion.

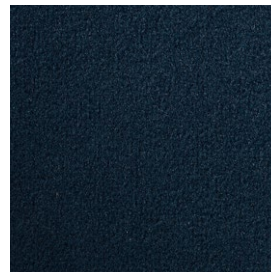
Upholstery Care: Spot clean with a damp white cloth. Blot to remove excess water. Air dry or consult with a professional upholstery cleaner.



Performance Plush
Velvet, Camel



Performance Plush
Velvet, Slate



Performance Plush
Velvet, Navy



PERFORMANCE SLUB COTTON

Fabric is treated with plant-based water repellent; resists stains and cleans easily without losing its softness.

Content: 100% Cotton

Grade: D, Contract Grade

Rub Count: 50K

Slipcover Care: Machine wash cold, gentle cycle, chlorine or non-chlorine bleach as needed. Rinse thoroughly, air dry; or spot clean with a damp white cloth and natural soap in lukewarm water using blotting motion.

Upholstery Care: Spot clean with a damp white cloth. Blot to remove excess water. Air dry or consult with a professional upholstery cleaner.



Performance Slub Cotton,
White



Performance Slub Cotton,
Ivory



Performance Slub Cotton,
Silver Taupe



Performance Slub Cotton,
Stone



Performance Slub Cotton,
Metal Gray



PERFORMANCE TWILL

An ultrasoft, long-wearing microsuede fabric that's brushed for softness and easy to clean.

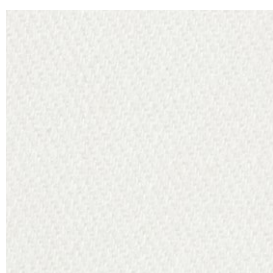
Content: 100% Cotton

Grade: C

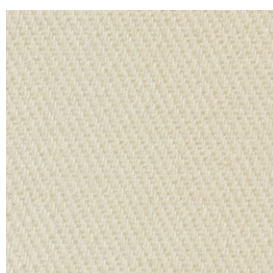
Rub Count: 100K

Slipcover Care: Machine wash cold, gentle cycle, chlorine or non-chlorine bleach as needed. Rinse thoroughly, air dry; or spot clean with a damp white cloth and natural soap in lukewarm water using blotting motion.

Upholstery Care: Spot clean with a damp white cloth. Blot to remove excess water. Air dry or consult with a professional upholstery cleaner.



Performance Twill,
Warm White



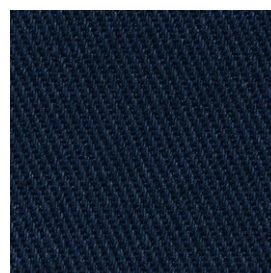
Performance Twill,
Cream



Performance Twill,
Stone



Performance Twill,
Metal Gray



Performance Twill,
Cadet Navy



PREMIUM PERFORMANCE AWNING STRIPE

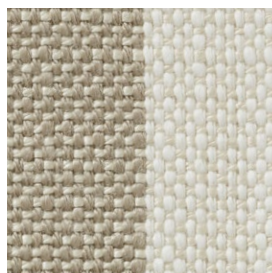
A classic linen-like texture woven from spun, irregular yarns, with the superior characteristics of solution-dyed acrylic: bleach cleanable and UV-, mildew- and soil-resistant. This texture softens with use and wear, and may develop a brushed appearance.

Content: 100% Solution-Dyed Acrylic

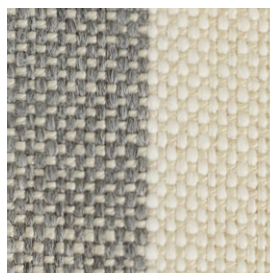
Grade: P

Slipcover Care: Machine wash cold, gentle cycle, chlorine or non-chlorine bleach as needed. Rinse thoroughly, air dry; or spot clean with a damp white cloth and natural soap in lukewarm water using blotting motion.

Upholstery Care: Spot clean with a damp white cloth. Blot to remove excess water. Air dry or consult with a professional upholstery cleaner.



Premium Performance
Awning Stripe,
Oatmeal/Ivory



Premium Performance
Awning Stripe,
Light Gray/Ivory



PREMIUM PERFORMANCE BASKETWEAVE

A beautiful, linen-like texture that offers all the benefits of performance fabric. Innovative solution-dyed acrylic is resistant to mildew, fading and stains.

Content: 100% Solution-Dyed Acrylic

Grade: P

Slipcover Care: Machine wash cold, gentle cycle, chlorine or non-chlorine bleach as needed. Rinse thoroughly, air dry; or spot clean with a damp white cloth and natural soap in lukewarm water using blotting motion.

Upholstery Care: Spot clean with a damp white cloth. Blot to remove excess water. Air dry or consult with a professional upholstery cleaner.



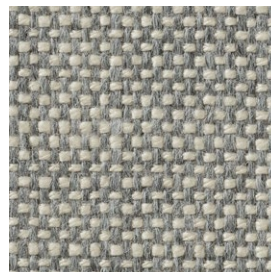
Premium Performance
Basketweave, Ivory



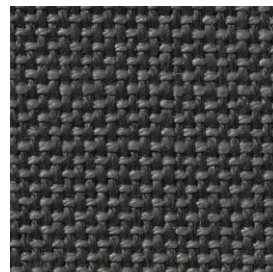
Premium Performance
Basketweave, Pebble



Premium Performance
Basketweave, Oatmeal



Premium Performance
Basketweave, Light Gray



Premium Performance
Basketweave, Charcoal



SUNBRELLA® PERFORMANCE BOSS HERRINGBONE

Fine herringbone pattern with subtle tonal colors. This innovative solution-dyed acrylic is resistant to fading and stains.

Content: 100% Sunbrella Acrylic

Grade: P

Slipcover Care: Machine wash cold, gentle cycle, chlorine or non-chlorine bleach as needed. Rinse thoroughly, air dry; or spot clean with a damp white cloth and natural soap in lukewarm water using blotting motion.

Upholstery Care: Spot clean with a damp white cloth. Blot to remove excess water. Air dry or consult with a professional upholstery cleaner.



Sunbrella Performance
Boss Herringbone, Ecru



Sunbrella Performance
Boss Herringbone, Pebble



Sunbrella Performance
Boss Herringbone, Indigo



Sunbrella Performance
Boss Herringbone, Charcoal



SUNBRELLA® PERFORMANCE CHENILLE

Crushed velvet texture woven of chenille yarn, resulting in a soft touch and dimensional color. This innovative solution-dyed acrylic is resistant to fading and stains.

Content: 100% Sunbrella Acrylic

Grade: P, Contract Grade

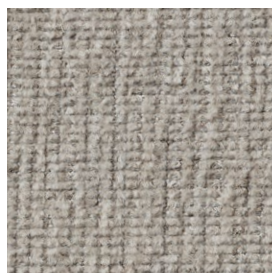
Rub Count: 50K

Slipcover Care: Machine wash cold, gentle cycle, chlorine or non-chlorine bleach as needed. Rinse thoroughly, air dry; or spot clean with a damp white cloth and natural soap in lukewarm water using blotting motion.

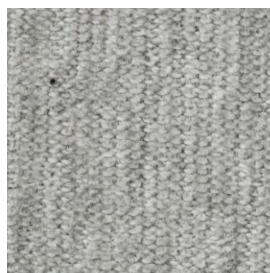
Upholstery Care: Spot clean with a damp white cloth. Blot to remove excess water. Air dry or consult with a professional upholstery cleaner.



Sunbrella Performance
Chenille, Salt



Sunbrella Performance
Chenille, Cloud



Sunbrella Performance
Chenille, Fog



Sunbrella Performance
Chenille, Indigo



SUNBRELLA® PERFORMANCE ESSENTIAL

Contemporary woven fabric with softly heathered tones. This innovative solution-dyed acrylic is resistant to fading and stains.

Content: 100% Sunbrella Acrylic

Grade: P

Slipcover Care: Machine wash cold, gentle cycle, chlorine or non-chlorine bleach as needed. Rinse thoroughly, air dry; or spot clean with a damp white cloth and natural soap in lukewarm water using blotting motion.

Upholstery Care: Spot clean with a damp white cloth. Blot to remove excess water. Air dry or consult with a professional upholstery cleaner.



Sunbrella Performance Essential, Sand



SUNBRELLA® PERFORMANCE HERRINGBONE

A densely woven, heavy herringbone fabric. This innovative solution-dyed acrylic is resistant to fading and stains.

Content: 100% Sunbrella Acrylic

Grade: P

Slipcover Care: Machine wash cold, gentle cycle, chlorine or non-chlorine bleach as needed. Rinse thoroughly, air dry; or spot clean with a damp white cloth and natural soap in lukewarm water using blotting motion.

Upholstery Care: Spot clean with a damp white cloth. Blot to remove excess water. Air dry or consult with a professional upholstery cleaner.



Sunbrella Performance Herringbone, Oatmeal



Sunbrella Performance Herringbone, Light Gray



SUNBRELLA® PERFORMANCE SAHARA WEAVE

Subtle strié design that creates both matte and lustrous effects. This innovative solution-dyed acrylic is resistant to fading and stains.

Content: 100% Sunbrella Acrylic

Grade: E

Slipcover Care: Machine wash cold, gentle cycle, chlorine or non-chlorine bleach as needed. Rinse thoroughly, air dry; or spot clean with a damp white cloth and natural soap in lukewarm water using blotting motion.

Upholstery Care: Spot clean with a damp white cloth. Blot to remove excess water. Air dry or consult with a professional upholstery cleaner.



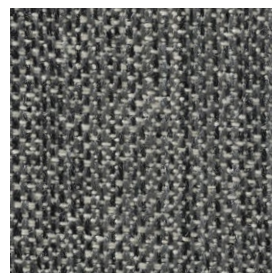
Sunbrella Performance
Sahara Weave, Ivory



Sunbrella Performance
Sahara Weave, Oatmeal



Sunbrella Performance
Sahara Weave, Mushroom



Sunbrella Performance
Sahara Weave, Charcoal



SUNBRELLA® PERFORMANCE SLUB TWEED

A dense woven fabric resulting in a tweed-like look. This innovative solution-dyed acrylic is resistant to fading and stains.

Content: 100% Sunbrella Acrylic

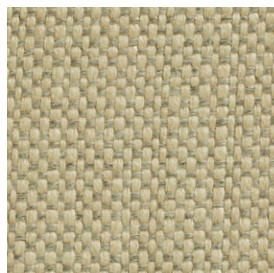
Grade: P

Slipcover Care: Machine wash cold, gentle cycle, chlorine or non-chlorine bleach as needed. Rinse thoroughly, air dry; or spot clean with a damp white cloth and natural soap in lukewarm water using blotting motion.

Upholstery Care: Spot clean with a damp white cloth. Blot to remove excess water. Air dry or consult with a professional upholstery cleaner.



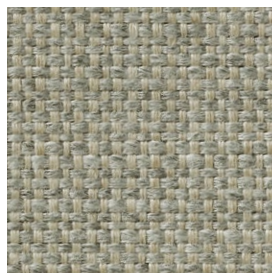
Sunbrella Performance
Slub Tweed, White



Sunbrella Performance
Slub Tweed, Pebble



Sunbrella Performance
Slub Tweed, Oatmeal



Sunbrella Performance
Slub Tweed, Ash



Sunbrella Performance
Slub Tweed, Charcoal

EXPLORE OUR FABRICS

SUBTLE TEXTURE

Our lightly textured fabrics add just the right amount of visual interest.



PERFORMANCE BRUSHED BASKETWEAVE

Supersoft natural-fiber fabric with a subtle woven texture that's durable and easy to clean.

Content: 100% Cotton

Grade: P

Slipcover Care: Dry clean. Can be spot cleaned with a damp white cloth, blot to remove excess water, air dry.

Upholstery Care: Spot clean with a damp white cloth. Blot to remove excess water. Air dry or consult with a professional upholstery cleaner.



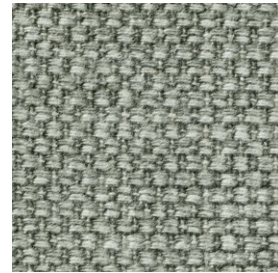
Performance Brushed Basketweave, Ivory



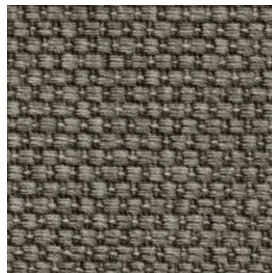
Performance Brushed Basketweave, Oatmeal



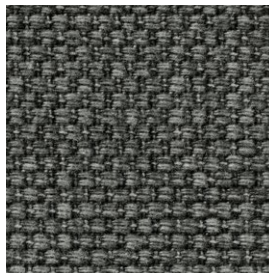
Performance Brushed Basketweave, Sand



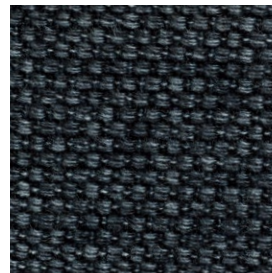
Performance Brushed Basketweave, Chambray



Performance Brushed Basketweave, Charcoal



Performance Brushed Basketweave, Slate



Performance Brushed Basketweave, Indigo Blue



PREMIUM PERFORMANCE BASKETWEAVE

A beautiful, linen-like texture that offers all the benefits of performance fabric. Innovative solution-dyed acrylic is resistant to mildew, fading and stains.

Content: 100% Solution-Dyed Acrylic

Grade: P

Slipcover Care: Machine wash cold, gentle cycle, chlorine or non-chlorine bleach as needed. Rinse thoroughly, air dry; or spot clean with a damp white cloth and natural soap in lukewarm water using blotting motion.

Upholstery Care: Spot clean with a damp white cloth. Blot to remove excess water. Air dry or consult with a professional upholstery cleaner.



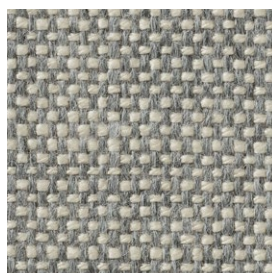
Premium Performance
Basketweave, Ivory



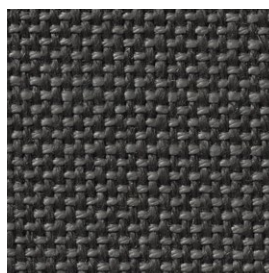
Premium Performance
Basketweave, Pebble



Premium Performance
Basketweave, Oatmeal



Premium Performance
Basketweave, Light Gray



Premium Performance
Basketweave, Charcoal



SUNBRELLA® PERFORMANCE ESSENTIAL

Contemporary woven fabric with softly heathered tones. This innovative solution-dyed acrylic is resistant to fading and stains.

Content: 100% Sunbrella Acrylic

Grade: P

Slipcover Care: Machine wash cold, gentle cycle, chlorine or non-chlorine bleach as needed. Rinse thoroughly, air dry; or spot clean with a damp white cloth and natural soap in lukewarm water using blotting motion.

Upholstery Care: Spot clean with a damp white cloth. Blot to remove excess water. Air dry or consult with a professional upholstery cleaner.



Sunbrella Performance Essential, Sand



TEXTURED BASKETWEAVE

Traditional fabric with a woven pattern made from a linen blend that offers soft texture and subtle tone nuances.

Content: 52% Linen, 33% Rayon, 15% Cotton

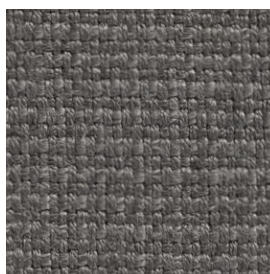
Grade: D

Slipcover Care: Spot clean with a damp white cloth. Blot to remove excess water. May be Dry cleaned.

Upholstery Care: Spot clean with a damp white cloth. Blot to remove excess water. Air dry, or consult with a professional upholstery cleaner.



Textured Basketweave, Flax



Textured Basketweave, Metal Gray



Textured Basketweave, Black

EXPLORE OUR FABRICS

DISTINCTIVE TEXTURE

Heavyweight yet soft, our richly textured fabrics bring warmth and dimension to your space.



JUMBO BASKETWEAVE

Crafted in the USA with premium yarns, this fabric boasts a distinctly oversized weave that creates tonal depth.

Content: 36% Polyester, 25% Polypropylene, 24% Viscose, 15% Cotton

Grade: E

Slipcover Care: Spot Clean with a Damp White Cloth, Blot to remove excess water, air dry.

Upholstery Care: Spot clean with a damp white cloth. Blot to remove excess water. Air dry or consult with a professional upholstery cleaner.



Jumbo Basketweave,
Ivory



Jumbo Basketweave,
Oatmeal



Jumbo Basketweave,
Pebble



Jumbo Basketweave,
Dark Truffle



PERFORMANCE BOUCLÉ

Richly textured, nubby fabric made from curled fibers that's cozy, durable and easy to clean.

Content: 79% Polyester, 16% Acrylic, 5% Linen

Grade: P, Contract Grade

Rub Count: 50K

Slipcover Care: Machine wash cold, gentle cycle, chlorine or non-chlorine bleach as needed. Rinse thoroughly, air dry; or spot clean with a damp white cloth and natural soap in lukewarm water using blotting motion.

Upholstery Care: Spot clean with a damp white cloth. Blot to remove excess water. Air dry or consult with a professional upholstery cleaner.



Performance Bouclé,
Oatmeal



Performance Bouclé,
Pebble



Performance Bouclé,
Dark Truffle



Performance Bouclé,
Charcoal



PERFORMANCE CHÂTEAU BASKETWEAVE

Richly textured with incredible durability, this easy-to-clean, chunky woven fabric offers a wool-like feel and heathered appearance.

Content: 47% Acrylic, 18% Viscose, 11% Polyester, 11% Wool, 10% Cotton, 3% Nylon

Grade: P, Contract Grade

Rub Count: 100K

Slipcover Care: Dry clean. Can be spot cleaned with a damp white cloth, blot to remove excess water, air dry.

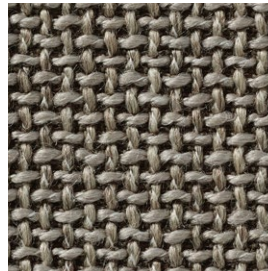
Upholstery Care: Spot clean with a damp white cloth. Blot to remove excess water. Air dry or consult with a professional upholstery cleaner.



Performance Chateau
Basketweave, Ivory



Performance Chateau
Basketweave, Oatmeal



Performance Chateau
Basketweave, Light Gray



Performance Chateau
Basketweave, Blue



SUNBRELLA® PERFORMANCE BOSS HERRINGBONE

Fine herringbone pattern with subtle tonal colors. This innovative solution-dyed acrylic is resistant to fading and stains.

Content: 100% Sunbrella Acrylic

Grade: P

Slipcover Care: Machine wash cold, gentle cycle, chlorine or non-chlorine bleach as needed. Rinse thoroughly, air dry; or spot clean with a damp white cloth and natural soap in lukewarm water using blotting motion.

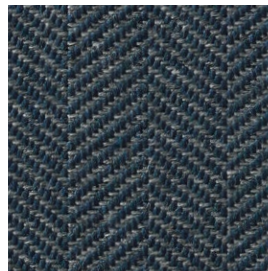
Upholstery Care: Spot clean with a damp white cloth. Blot to remove excess water. Air dry or consult with a professional upholstery cleaner.



Sunbrella Performance
Boss Herringbone, Ecru



Sunbrella Performance
Boss Herringbone, Pebble



Sunbrella Performance
Boss Herringbone, Indigo



Sunbrella Performance
Boss Herringbone, Charcoal



SUNBRELLA® PERFORMANCE HERRINGBONE

A densely woven, heavy herringbone fabric. This innovative solution-dyed acrylic is resistant to fading and stains.

Content: 100% Sunbrella Acrylic

Grade: P

Slipcover Care: Machine wash cold, gentle cycle, chlorine or non-chlorine bleach as needed. Rinse thoroughly, air dry; or spot clean with a damp white cloth and natural soap in lukewarm water using blotting motion.

Upholstery Care: Spot clean with a damp white cloth. Blot to remove excess water. Air dry or consult with a professional upholstery cleaner.



Sunbrella Performance
Herringbone, Oatmeal



Sunbrella Performance
Herringbone, Light Gray



SUNBRELLA® PERFORMANCE SAHARA WEAVE

Subtle strié design that creates both matte and lustrous effects. This innovative solution-dyed acrylic is resistant to fading and stains.

Content: 100% Sunbrella Acrylic

Grade: E

Slipcover Care: Machine wash cold, gentle cycle, chlorine or non-chlorine bleach as needed. Rinse thoroughly, air dry; or spot clean with a damp white cloth and natural soap in lukewarm water using blotting motion.

Upholstery Care: Spot clean with a damp white cloth. Blot to remove excess water. Air dry or consult with a professional upholstery cleaner.



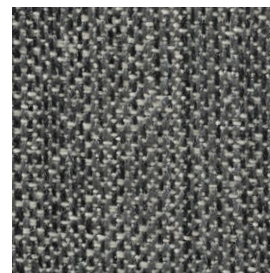
Sunbrella Performance
Sahara Weave, Ivory



Sunbrella Performance
Sahara Weave, Oatmeal



Sunbrella Performance
Sahara Weave, Mushroom



Sunbrella Performance
Sahara Weave, Charcoal

EXPLORE OUR FABRICS

LINEN APPEAL

Refined yet resilient, these linen-inspired fabrics have a relaxed look and premium feel.



BASKETWEAVE SLUB

A heavily textured fabric with a woven pattern and heathered appearance.

Content: 100% Polyester

Grade: B, Contract Grade

Rub Count: 50K

Slipcover Care: Machine wash cold, gentle cycle, chlorine or non-chlorine bleach as needed. Rinse thoroughly, air dry; or spot clean with a damp white cloth and natural soap in lukewarm water using blotting motion.

Upholstery Care: Spot clean with a damp white cloth. Blot to remove excess water. Air dry or consult with a professional upholstery cleaner.



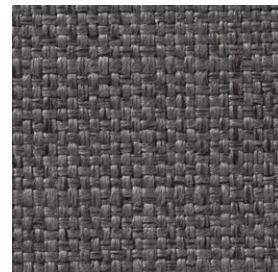
Basketweave Slub,
Ivory



Basketweave Slub,
Oatmeal



Basketweave Slub,
Ash



Basketweave Slub,
Charcoal



BELGIAN LINEN

The finest in luxury linen, this breathable, durable fabric comes from Libeco™, one of Belgium's oldest and most famous mills.

Content: 100% Linen

Grade: P

Slipcover Care: Dry clean. Can be spot cleaned with a damp white cloth, blot to remove excess water, air dry.

Upholstery Care: Spot clean with a damp white cloth. Blot to remove excess water. Air dry or consult with a professional upholstery cleaner.



Belgian Linen,
Natural



Belgian Linen,
Light Gray



CLASSIC BASKETWEAVE

A tight woven pattern made from a cotton blend with classic, sophisticated style.

Content: 100% Cotton

Grade: D

Slipcover Care: Dry clean. Can be spot cleaned with a damp white cloth, Blot to remove excess water, air dry.

Upholstery Care: Spot clean with a damp white cloth. Blot to remove excess water. Air dry, or consult with a professional upholstery cleaner.



Classic Basketweave,
Linen



PERFORMANCE EVERYDAYLINEN™ BY CRYPTON® HOME

A classic basketweave of linen and slub yarns give this fabric a beautiful, irregular texture that's soft and durable. This fabric has been engineered with Crypton® Home's superior performance technology for easy cleanup.

Content: 51% Rayon, 22% Linen, 16% Polyester, 11% Cotton

Grade: E, Contract Grade

Rub Count: 50K

Slipcover Care: Dry clean. Can be spot cleaned with a damp white cloth, blot to remove excess water, air dry.

Upholstery Care: Spot clean with a damp white cloth. Blot to remove excess water. Air dry or consult with a professional upholstery cleaner.



Performance
Everydaylinen, Ivory



Performance
Everydaylinen, Oatmeal



Performance
Everydaylinen, Stone



PERFORMANCE SLUB COTTON

Fabric is treated with plant-based water repellent; resists stains and cleans easily without losing its softness.

Content: 100% Cotton

Grade: D, Contract Grade

Rub Count: 50K

Slipcover Care: Machine wash cold, gentle cycle, chlorine or non-chlorine bleach as needed. Rinse thoroughly, air dry; or spot clean with a damp white cloth and natural soap in lukewarm water using blotting motion.

Upholstery Care: Spot clean with a damp white cloth. Blot to remove excess water. Air dry or consult with a professional upholstery cleaner.



Performance Slub Cotton,
White



Performance Slub Cotton,
Ivory



Performance Slub Cotton,
Silver Taupe



Performance Slub Cotton,
Stone



Performance Slub Cotton,
Metal Gray



SUNBRELLA® PERFORMANCE SLUB TWEED

A dense woven fabric resulting in a tweed-like look. This innovative solution-dyed acrylic is resistant to fading and stains.

Content: 100% Sunbrella Acrylic

Grade: P

Slipcover Care: Machine wash cold, gentle cycle, chlorine or non-chlorine bleach as needed. Rinse thoroughly, air dry; or spot clean with a damp white cloth and natural soap in lukewarm water using blotting motion.

Upholstery Care: Spot clean with a damp white cloth. Blot to remove excess water. Air dry or consult with a professional upholstery cleaner.



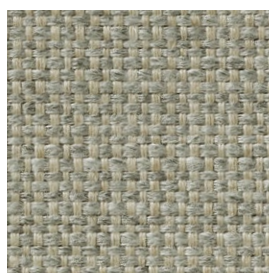
Sunbrella Performance
Slub Tweed, White



Sunbrella Performance
Slub Tweed, Pebble



Sunbrella Performance
Slub Tweed, Oatmeal



Sunbrella Performance
Slub Tweed, Ash



Sunbrella Performance
Slub Tweed, Charcoal

WASHED LINEN/COTTON

A tailored weave with a light laid-back look that's prewashed for incredible softness.

Content: 55% Linen, 45% Cotton

Grade: C

Slipcover Care: Machine wash cold, gentle cycle, do not bleach. Tumble dry low. Warm iron as needed or spot clean with a damp white cloth, blot to remove excess water, air dry. Line drying not recommended.

Upholstery Care: Spot clean with a damp white cloth. Blot to remove excess water. Air dry or consult with a professional upholstery cleaner.



Washed Linen/Cotton,
White



Washed Linen/Cotton,
Ivory



Washed Linen/Cotton,
Silver Taupe



Washed Linen/Cotton,
Walnut



Washed Linen/Cotton,
Camel

EXPLORE OUR FABRICS

RELAXED CASUAL

Classic, timeless, and versatile, these easygoing fabrics are always a good idea.



BRUSHED CANVAS

A straight weave fabric that's brushed for a sueded feel that's both cozy and durable.

Content: 100% Cotton

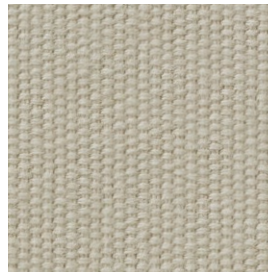
Grade: B

Slipcover Care: Machine wash cold, gentle cycle, only non-chlorine bleach when needed. Clean complete ensemble simultaneously to avoid color differences. Tumble dry low. Warm iron as needed. Do not spot clean. Line drying not recommended.

Upholstery Care: Do not spot clean. Consult with a professional upholstery cleaner.



Brushed Canvas,
Natural



Brushed Canvas,
Stone



BRUSHED CROSSWEAVE

Finely textured weave that's brushed for an extremely soft touch. Woven yarn in varying tones creates subtle highs and lows.

Content: 95% Polyester, 5% Nylon

Grade: B

Slipcover Care: Machine wash cold, gentle cycle, chlorine or non-chlorine bleach as needed. Rinse thoroughly, air dry; or spot clean with a damp white cloth and natural soap in lukewarm water using blotting motion.

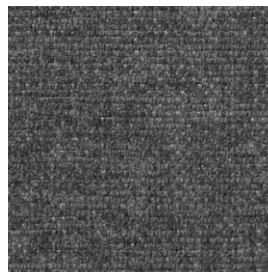
Upholstery Care: Spot clean with a damp white cloth. Blot to remove excess water. Air dry or consult with a professional upholstery cleaner.



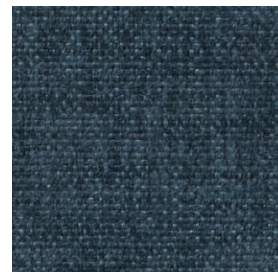
Brushed Crossweave,
Light Gray



Brushed Crossweave,
Natural



Brushed Crossweave,
Charcoal



Brushed Crossweave,
Navy



DENIM

Made of all-natural cotton and washed for extra softness. Sturdy denim construction is both classic and family-friendly.

Content: 100% Cotton

Grade: B, Contract Grade

Rub Count: 50K

Slipcover Care: Machine wash cold, gentle cycle, only non-chlorine bleach when needed. Clean complete ensemble simultaneously to avoid color differences. Tumble dry low. Warm iron as needed. May be Dry cleaned.

Upholstery Care: Spot clean with a damp white cloth. Blot to remove excess water. Air dry or consult with a professional upholstery cleaner. Note: Some color transfer is possible. Dry all spills thoroughly before use.



Denim, Warm White



HEATHERED TWILL

Classic diagonal weave that's silky and soft to the touch. Blended yarn creates a heathered look.

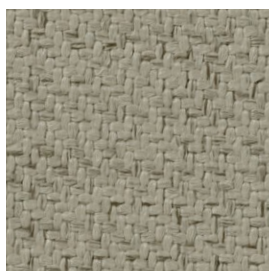
Content: 100% Polyester

Grade: C, Contract Grade

Rub Count: 50K

Slipcover Care: Dry clean. Can be spot cleaned with a damp white cloth, blot to remove excess water, air dry.

Upholstery Care: Spot clean with a damp white cloth. Blot to remove excess water. Air dry or consult with a professional upholstery cleaner.



Heathered Twill,
Stone



PARK WEAVE

Symmetrical crosshatch weave with smooth texture and subtle tonal striations, designed at an unparalleled value.

Content: 100% Polyester

Grade: Studio

Rub Count: 50K

Slipcover Care: Machine wash cold, gentle cycle, only non-chlorine bleach when needed. Tumble dry low. Warm iron as needed or spot clean with a damp white cloth, blot to remove excess water, air dry.

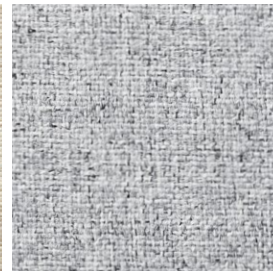
Upholstery Care: Spot clean with a damp white cloth. Blot to remove excess water. Air dry or consult with a professional upholstery cleaner.



Park Weave, Ivory



Park Weave, Oatmeal



Park Weave, Ash



PERFORMANCE TWILL

An ultrasoft, long-wearing microsuede fabric that's brushed for softness and easy to clean.

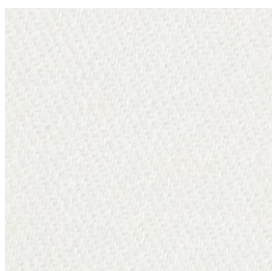
Content: 100% Cotton

Grade: C

Rub Count: 100K

Slipcover Care: Machine wash cold, gentle cycle, chlorine or non-chlorine bleach as needed. Rinse thoroughly, air dry; or spot clean with a damp white cloth and natural soap in lukewarm water using blotting motion.

Upholstery Care: Spot clean with a damp white cloth. Blot to remove excess water. Air dry or consult with a professional upholstery cleaner.



Performance Twill,
Warm White



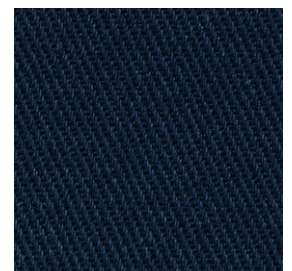
Performance Twill,
Cream



Performance Twill,
Stone



Performance Twill,
Metal Gray



Performance Twill,
Cadet Navy



TEXTURED TWILL

Classic diagonal weave spun with variegated colors for a heathered look. Innovative, colorfast yarn is resistant to fading.

Content: 96% Polyester, 4% Other Fabric

Grade: B

Slipcover Care: Machine wash cold, gentle cycle, only non-chlorine bleach when needed. Tumble dry low. Warm iron as needed or spot clean with a damp white cloth, blot to remove excess water, air dry.

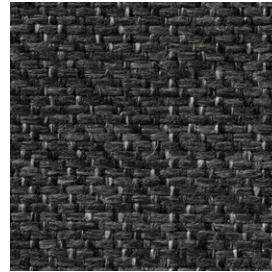
Upholstery Care: Spot clean with a damp white cloth. Blot to remove excess water. Air dry or consult with a professional upholstery cleaner.



Textured Twill,
Khaki



Textured Twill,
Light Gray



Textured Twill,
Charcoal



TWILL

Classic weave made from 100% all-natural cotton that features an understated diagonal pattern.

Content: 100% Cotton

Grade: A, Contract Grade

Rub Count: 100K

Slipcover Care: Machine wash cold, gentle cycle, only non-chlorine bleach as needed. Tumble dry low. Warm iron as needed or spot clean with a damp white cloth, blot to remove excess water, air dry.

Upholstery Care: Spot clean with a damp white cloth. Blot to remove excess water. Air dry or consult with a professional upholstery cleaner.



Twill, White



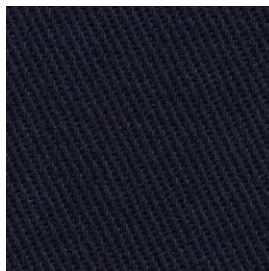
Twill, Cream



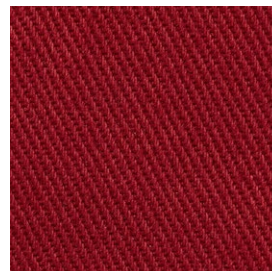
Twill, Parchment



Twill, Metal Gray



Twill, Cadet Navy



Twill, Sierra Red

WASHED CANVAS

Durable denim-like fabric with heavyweight canvas construction that's crisp, cool and specially washed for a casual look.

Content: 66% Cotton, 32% Polyester, 2% Other Fiber

Grade: A

Slipcover Care: Machine wash cold, gentle cycle, only non-chlorine bleach when needed. Clean complete ensemble simultaneously to avoid color differences. Tumble dry low. Warm iron as needed. Do not spot clean. Line drying not recommended.

Upholstery Care: Do not spot clean. Consult with a professional upholstery cleaner.



Washed Canvas,
Stone



Washed Canvas,
Graphite

EXPLORE OUR FABRICS

PLUSH & COZY

These cozy fabrics, defined by their incredibly soft hand, are made for lounging.



CHENILLE BASKETWEAVE

Multi-textured woven pattern made with plush chenille yarns for a soft touch. Tonal yarns create a heathered effect.

Content: 100% Polyester

Grade: A

Slipcover Care: Machine wash cold, gentle cycle, chlorine or non-chlorine bleach as needed. Rinse thoroughly, air dry; or spot clean with a damp white cloth and natural soap in lukewarm water using blotting motion.

Upholstery Care: Spot clean with a damp white cloth. Blot to remove excess water. Air dry. Or consult with a professional upholstery cleaner.



Chenille Basketweave,
Oatmeal



Chenille Basketweave,
Pebble



Chenille Basketweave,
Taupe



Chenille Basketweave,
Charcoal



PERFORMANCE EVERYDAYSUEDE™

An ultrasoft, long-wearing microsuede fabric that's brushed for softness and easy to clean.

Content: 100% Polyester

Grade: C, Contract Grade

Rub Count: 50K

Slipcover Care: Dry clean. Can be spot cleaned with a damp white cloth, blot to remove excess water, air dry.

Upholstery Care: Spot clean with a damp white cloth. Blot to remove excess water. Air dry or consult with a professional upholstery cleaner.



Performance
Everydaysuede, Stone



Performance
Everydaysuede, Oat



Performance
Everydaysuede, Light Wheat



Performance
Everydaysuede, Metal Gray



PERFORMANCE EVERYDAYVELVET™

A long-wearing, high-performance velvet with a soft, plush pile for a luxurious feeling fabric that's easy to clean.

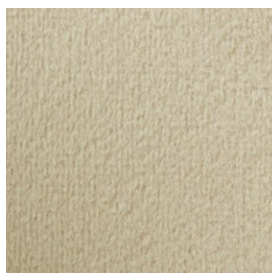
Content: 100% Polyester Face

Grade: A, Contract Grade

Rub Count: 50K

Slipcover Care: Dry clean. Can be spot cleaned with a damp white cloth, blot to remove excess water, air dry.

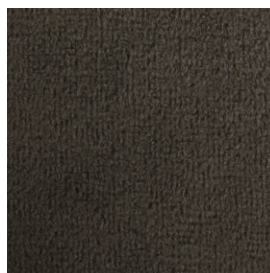
Upholstery Care: Spot clean with a damp white cloth. Blot to remove excess water. Air dry or consult with a professional upholstery cleaner.



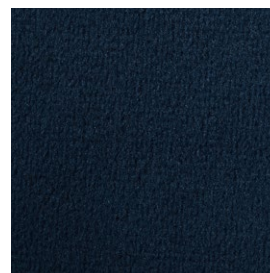
Performance
Everydayvelvet, Buckwheat



Performance
Everydayvelvet, Carbon



Performance
Everydayvelvet, Smoke



Performance
Everydayvelvet, Navy



PERFORMANCE HEATHERED TWEED

Crafted from soft, chenille yarn in variegated colors for a tweed-like look and superior stain resistance.

Content: 100% Polyester

Grade: P, Contract Grade

Rub Count: 50K

Slipcover Care: Machine wash cold, gentle cycle, only non-chlorine bleach when needed. Tumble dry low. Warm iron as needed or spot clean with a damp white cloth, blot to remove excess water, air dry.

Upholstery Care: Spot clean with a damp white cloth. Blot to remove excess water. Air dry or consult with a professional upholstery cleaner.



Performance Heathered
Tweed, Ivory



Performance Heathered
Tweed, Pebble



Performance Heathered
Tweed, Desert



Performance Heathered
Tweed, Graphite



Performance Heathered
Tweed, Indigo



PERFORMANCE HEATHERED VELVET

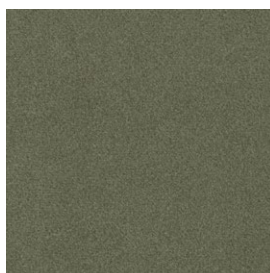
Buttery soft, velvety texture that offers the strength and stain resistance of performance fabrics. Features a touchable low pile and matte finish.

Content: 100% Polyester

Grade: D

Slipcover Care: Machine wash cold, gentle cycle, chlorine or non-chlorine bleach as needed. Tumble dry low. Warm iron as needed or spot clean with a damp white cloth, blot to remove excess water, air dry.

Upholstery Care: Spot clean with a damp white cloth. Blot to remove excess water. Air dry or consult with a professional upholstery cleaner.



Performance Heathered
Velvet, Olive



PERFORMANCE PLUSH VELVET

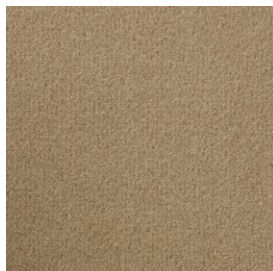
The luxe appeal of velvet in an easy-to-clean fabric. Soft to the touch with a refined matte finish.

Content: 100% Polyester

Grade: B, Contract Grade

Slipcover Care: Machine wash cold, gentle cycle, chlorine or non-chlorine bleach as needed. Rinse thoroughly, air dry; or spot clean with a damp white cloth and natural soap in lukewarm water using blotting motion.

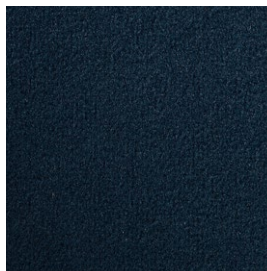
Upholstery Care: Spot clean with a damp white cloth. Blot to remove excess water. Air dry or consult with a professional upholstery cleaner.



Performance Plush
Velvet, Camel



Performance Plush
Velvet, Slate



Performance Plush
Velvet, Navy



SUNBRELLA® PERFORMANCE CHENILLE

Crushed velvet texture woven of chenille yarn, resulting in a soft touch and dimensional color. This innovative solution-dyed acrylic is resistant to fading and stains.

Content: 100% Sunbrella Acrylic

Grade: P, Contract Grade

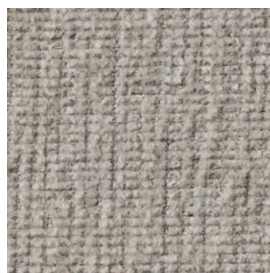
Rub Count: 50K

Slipcover Care: Machine wash cold, gentle cycle, chlorine or non-chlorine bleach as needed. Rinse thoroughly, air dry; or spot clean with a damp white cloth and natural soap in lukewarm water using blotting motion.

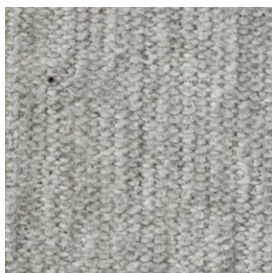
Upholstery Care: Spot clean with a damp white cloth. Blot to remove excess water. Air dry or consult with a professional upholstery cleaner.



Sunbrella Performance
Chenille, Salt



Sunbrella Performance
Chenille, Cloud



Sunbrella Performance
Chenille, Fog



Sunbrella Performance
Chenille, Indigo

EXPLORE OUR FABRICS

PRINT & PATTERN

Our most-loved prints and patterns offer an easy way to bring in a pop of personality.



ANTIQUE STRIPE

Classic mid-scale striped pattern tightly woven from 100% all-natural canvas cotton.

Content: 100% Cotton

Grade: C

Slipcover Care: Dry clean. Can be spot cleaned with a damp white cloth, blot to remove excess water, air dry.

Upholstery Care: Spot clean with a damp white cloth. Blot to remove excess water. Air dry or consult with a professional upholstery cleaner.



Antique Stripe, Blue



Antique Stripe, Gray



EVA PAISLEY PRINT

Durable, breathable all-natural linen construction. Printed fabric made with innovative techniques that carefully bond fibers with rich color.

Content: 100% Linen

Grade: P

Slipcover Care: Dry clean. Can be spot cleaned with a damp white cloth, blot to remove excess water, air dry.

Upholstery Care: Spot clean with a damp white cloth. Blot to remove excess water. Air dry, or consult with a professional upholstery cleaner.



Eva Paisley Print, Navy

FADED SHIBORI

Inspired by an ancient Japanese textile art. Printed fabric made with innovative techniques that carefully bond fibers with rich color.

Content: 97% Polyester, 3% Linen

Grade: C

Slipcover Care: Dry clean. Can be spot cleaned with a damp white cloth, blot to remove excess water, air dry.

Upholstery Care: Spot clean with a damp white cloth. Blot to remove excess water. Air dry, or consult with a professional upholstery cleaner.



Faded Shibori,
Indigo Blue



IKAT GEO

Printed fabric made with innovative techniques that carefully bond fibers with rich color to create a beautiful ikat pattern.

Content: 100% Cotton

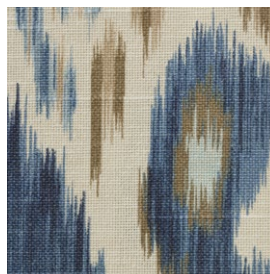
Grade: C

Slipcover Care: Dry clean. Can be spot cleaned with a damp white cloth, blot to remove excess water, air dry.

Upholstery Care: Spot clean with a damp white cloth. Blot to remove excess water. Air dry, or consult with a professional upholstery cleaner.



Ikat Geo, Gray



Ikat Geo, Blue



KENDALL PRINT

Printed fabric made with innovative techniques that carefully bond fibers with rich color to create a beautiful mosaic pattern.

Content: 88% Cotton, 12% Rayon

Grade: C

Slipcover Care: Dry clean. Can be spot cleaned with a damp white cloth, blot to remove excess water, air dry.

Upholstery Care: Spot clean with a damp white cloth. Blot to remove excess water. Air dry, or consult with a professional upholstery cleaner.



Kendall Print, Navy



SHALIMAR JACQUARD

Raised graphic pattern created with chenille-like blue yarn woven on a smooth ivory background.

Content: 83% Polyester, 17% Cotton

Grade: P

Slipcover Care: Dry clean. Can be spot cleaned with a damp white cloth, blot to remove excess water, air dry.

Upholstery Care: Spot clean with a damp white cloth. Blot to remove excess water. Air dry or consult with a professional upholstery cleaner.



Shalimar Jacquard, Blue

VINTAGE GRAINSACK BUFFALO

Classic mid-scale gingham pattern created from durable yarn-dyed fibers for casual, lasting style.

Content: 100% Polyester

Grade: P

Slipcover Care: Dry clean. Can be spot cleaned with a damp white cloth, blot to remove excess water, air dry.

Upholstery Care: Spot clean with a damp white cloth. Blot to remove excess water. Air dry or consult with a professional upholstery cleaner.



Vintage Grainsack Buffalo,
Neutral



Vintage Grainsack Buffalo,
Blue/Flax

VINTAGE STRIPE

Timeless striped pattern created from durable yarn-dyed fibers for casual, lasting style.

Content: 100% Polyester

Grade: E

Slipcover Care: Dry clean. Can be spot cleaned with a damp white cloth, blot to remove excess water, air dry.

Upholstery Care: Spot clean with a damp white cloth. Blot to remove excess water. Air dry or consult with a professional upholstery cleaner.



Vintage Stripe,
Khaki/Ivory



Vintage Stripe,
Black/Ivory

OUR FAVORITE
LEATHERS

Our go-to leathers bring timeless style and warm appeal to any room in your home.



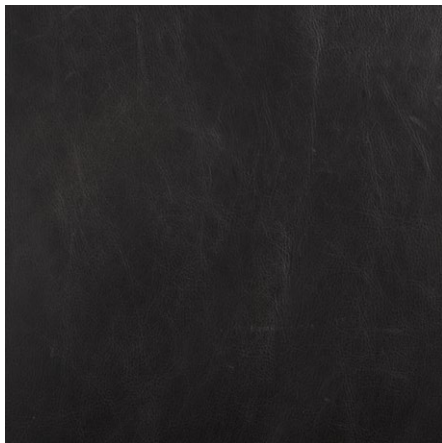
Statesville Leather,
Molasses



Vintage Leather,
Caramel



Burnished Leather,
Wolf Gray



Vintage Leather,
Midnight



Statesville Leather,
Indigo Blue

EXPLORE OUR FABRICS

LUXE LEATHERS

Beautiful, durable and buttery soft, our heirloom-quality leathers get even better with time.

CHURCHFIELD LEATHER

Semi-aniline dyed leather with butter-soft texture and exaggerated tone variation to highlight the hide's creases. Features a matte sheen that's versatile enough for any style.

Content: 100% Top-grain Leather

Tier: A

Care: Avoid direct heat and sunlight. If spills occur, immediately soak up any liquids with an absorbent cloth. Rub out minor scratches lightly with a finger. Thorough cleaning by a leather specialist only.



Churchfield,
Camel



Churchfield,
Chocolate



Churchfield,
Ebony

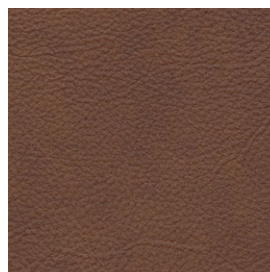
PERFORMANCE LEATHER

Family-friendly, semi-aniline dyed performance leather crafted with advanced finishing techniques that maintain the leather's desired look and tonality, while providing superior protection from scratching and standard wear.

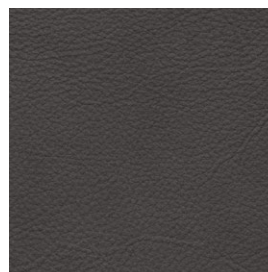
Content: 100% Top-Grain Leather

Tier: B

Care: Avoid direct heat and sunlight. If spills occur, immediately soak up any liquids with an absorbent cloth. Rub out minor scratches lightly with a finger. Thorough cleaning by a leather specialist only.



Performance Leather,
Kona



Performance Leather,
Carbon

STATESVILLE LEATHER

Semi-aniline dyed leather featuring tonal highs and lows, a slight sheen and smooth touch. Natural markings are inherent to the hide's natural beauty. This leather lightens and softens with use and time.

Content: 100% Top-Grain Leather

Tier: B

Care: Avoid direct heat and sunlight. If spills occur, immediately soak up any liquids with an absorbent cloth. Rub out minor scratches lightly with a finger. Thorough cleaning by a leather specialist only.



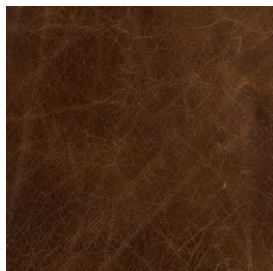
Statesville Leather,
Pebble



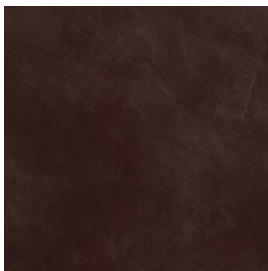
Statesville Leather,
Caramel



Statesville Leather,
Toffee



Statesville Leather,
Molasses



Statesville Leather,
Espresso



Statesville Leather,
Indigo Blue

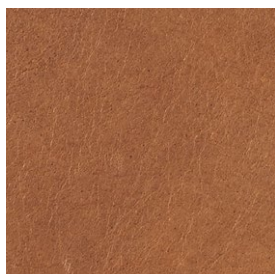
VINTAGE LEATHER

Semi-aniline dyed leather featuring an oil-waxed finish to create a beautiful patina with exaggerated highs and lows plus a supersoft touch. Natural markings are inherent to the hide's natural beauty. This leather lightens and softens with use and time.

Content: 100% Top-Grain Leather

Tier: C

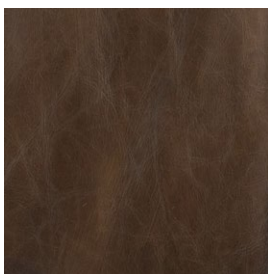
Care: Avoid direct heat and sunlight. If spills occur, immediately soak up any liquids with an absorbent cloth. Rub out minor scratches lightly with a finger. Thorough cleaning by a leather specialist only.



Vintage Leather,
Caramel



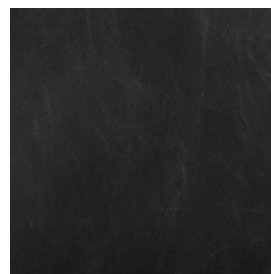
Vintage Leather,
Camel



Vintage Leather,
Cocoa



Vintage Leather,
Charcoal



Vintage Leather,
Midnight

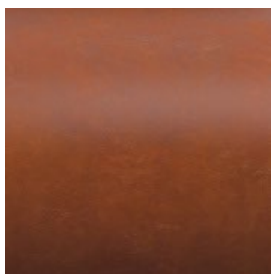
BURNISHED LEATHER

Semi-aniline dyed leather that's hand burnished for a dramatic, vintage-inspired look. Features moderate color variations and a soft, supple hand with natural markings inherent to the hide's natural beauty. This leather lightens and softens with use and time.

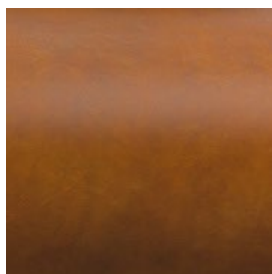
Content: 100% Top-Grain Leather

Tier: B

Care: Avoid direct heat and sunlight. If spills occur, immediately soak up any liquids with an absorbent cloth. Rub out minor scratches lightly with a finger. Thorough cleaning by a leather specialist only.



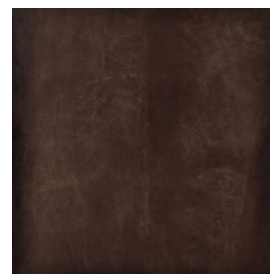
Burnished Leather,
Saddle



Burnished Leather,
Bourbon



Burnished Leather,
Wolf Gray



Burnished Leather,
Walnut

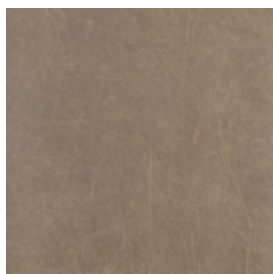
LEGACY LEATHER

Semi-aniline dyed leather saturated with gentle highlights and lowlights and showcasing minimal natural markings. Features an oil-waxed finish and is characterized by a slight sheen and rich, dimensional hues. Natural markings are inherent to the hide's natural beauty. This leather lightens and softens with use and time.

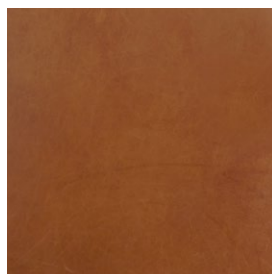
Content: 100% Top-Grain Leather

Tier: B

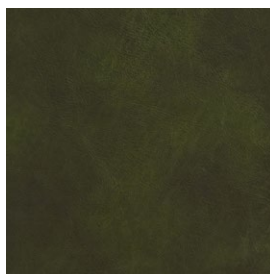
Care: Avoid direct heat and sunlight. If spills occur, immediately soak up any liquids with an absorbent cloth. Rub out minor scratches lightly with a finger. Thorough cleaning by a leather specialist only.



Legacy Leather,
Taupe



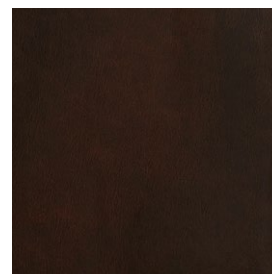
Legacy Leather,
Dark Caramel



Legacy Leather,
Forest Green



Legacy Leather,
Chocolate



Legacy Leather,
Tobacco

SIGNATURE LEATHER

Semi-aniline dyed leather that effortlessly combines value and quality. Finished with an oil wax, giving it minimal color variations, a subtle sheen and smooth touch. Natural markings are inherent to the hide's natural beauty. This leather lightens and softens with use and time.

Content: 100% Top-Grain Leather

Tier: A

Care: Avoid direct heat and sunlight. If spills occur, immediately soak up any liquids with an absorbent cloth. Rub out minor scratches lightly with a finger. Thorough cleaning by a leather specialist only.



Signature Leather,
Chalk



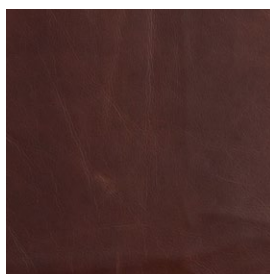
Signature Leather,
Adriatic Blue



Signature Leather,
Maple



Signature Leather,
Berry Red



Signature Leather,
Whiskey



Signature Leather,
Espresso

NUBUCK LEATHER

Lightly buffed hide with a velvety nap and matte pebble grain texture. Features color variation and natural marketing that are inherent to the hide's natural beauty. This leather lightens and softens with use and time.

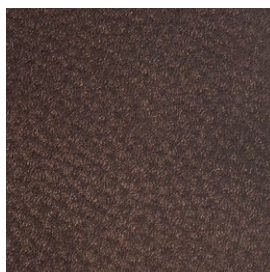
Content: 100% Top-Grain Leather

Tier: B

Care: Avoid direct heat and sunlight. If spills occur, immediately soak up any liquids with an absorbent cloth. Rub out minor scratches lightly with a finger. Thorough cleaning by a leather specialist only.



Nubuck Leather,
Fawn



Nubuck Leather,
Cocoa



Nubuck Leather,
Loden Green

VEGAN LEATHER

Designed to achieve the genuine look and tonal range of real leather, while providing feel-good value and quality.

Content: 100% Nylon

Tier: V

Care: Dust periodically with a clean dust cloth. For spots or smudges, lightly moisten a cloth with water and wipe clean.



Vegan Leather,
Java

ANTIQUE LEATHER*

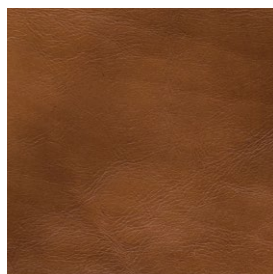
100% top grain, semi-aniline dyed leather, tanned and finished by hand in the USA, our handsome Antique Leather features a soft sheen that honors the hide's natural highs and lows.

***Turner Collection Only**

Content: 100% Top-Grain Leather

Tier: C

Care: Avoid direct heat and sunlight. If spills occur, immediately soak up any liquids with an absorbent cloth. Rub out minor scratches lightly with a finger. Thorough cleaning by a leather specialist only.



Antique,
Bourbon



Antique,
Iron



Antique,
Kodiak